

Lomonosov Moscow State University

Faculty of Biology

2015

Moscow University

founded 1755



Empress Elisabeth



Count Ivan Shuvalov



Mikhail Lomonosov

257 years later: **The biggest and leading comprehensive research university of Russia and ex-USSR**, especially strong in natural sciences

Lomonosov Moscow State University

- 40 faculties
- 380 departments and chairs
- 168 fields of study
- 15 research institutes
- 6 branches
- 4 museums
- Scientific library (9 million volumes)
- Scientific park
- Botanical gardens
- Medical center
- Supercomputer
- 40'000 students
- 10'000 PhD students and postdocs
- 7'500 international students from 100+ countries
- 18'000 professors and researchers
- 250 full and corresponding members of Russian Academy of Sciences

History of MSU Faculty of Biology

1755

Faculty of Medicine

Faculty of Philosophy

Faculty of Law

1850

Faculty of Physics and
Mathematics

1930

Faculty of Biology

1948

Faculty of Biology and Soil Science

1973+

Faculty of Biology

Inst for Physico-
Chemical Biology

Faculty of Fundamental Medicine

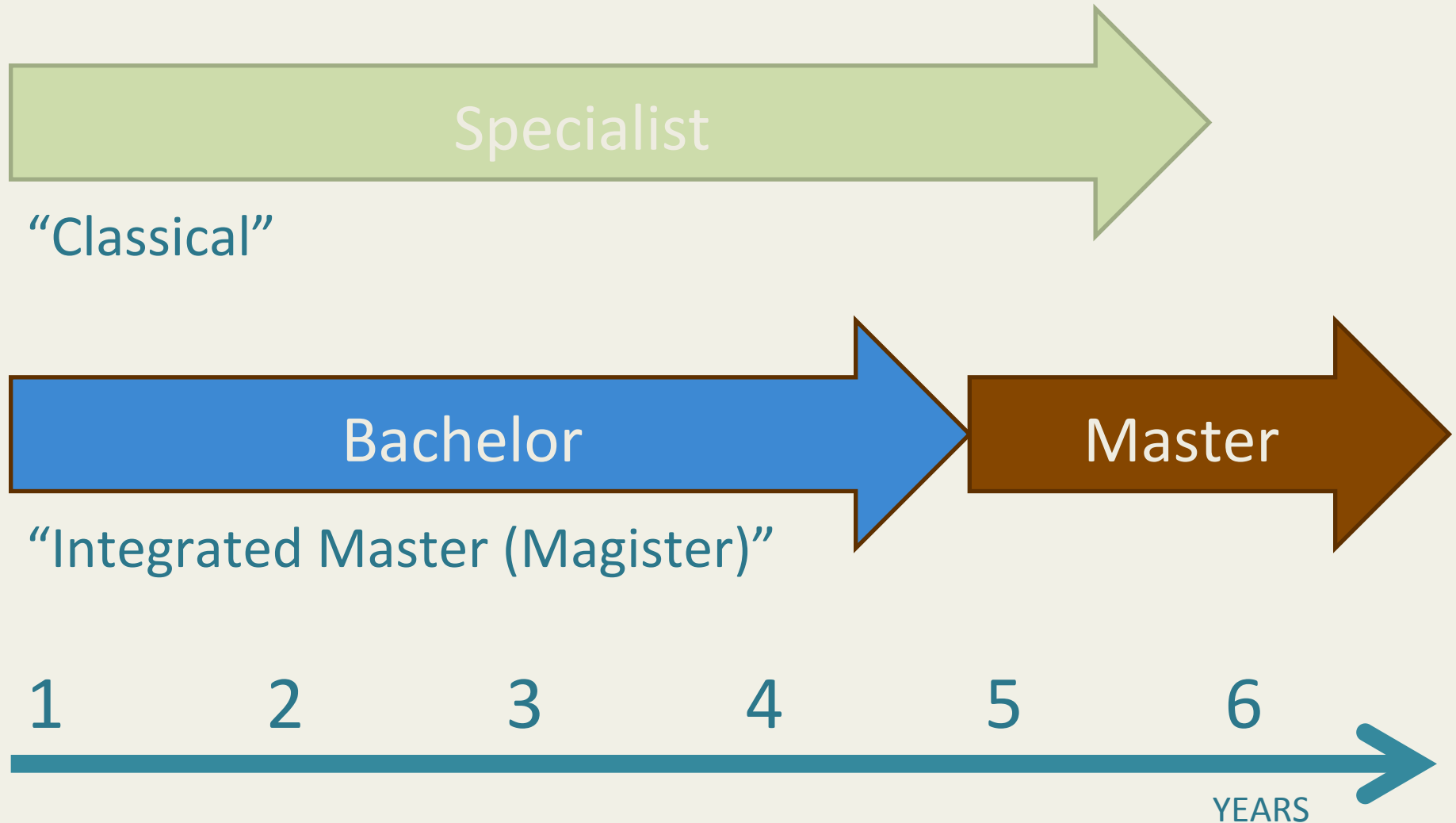
Faculty of Biotechnology

Faculty of Bioinformatics and Bioengineering

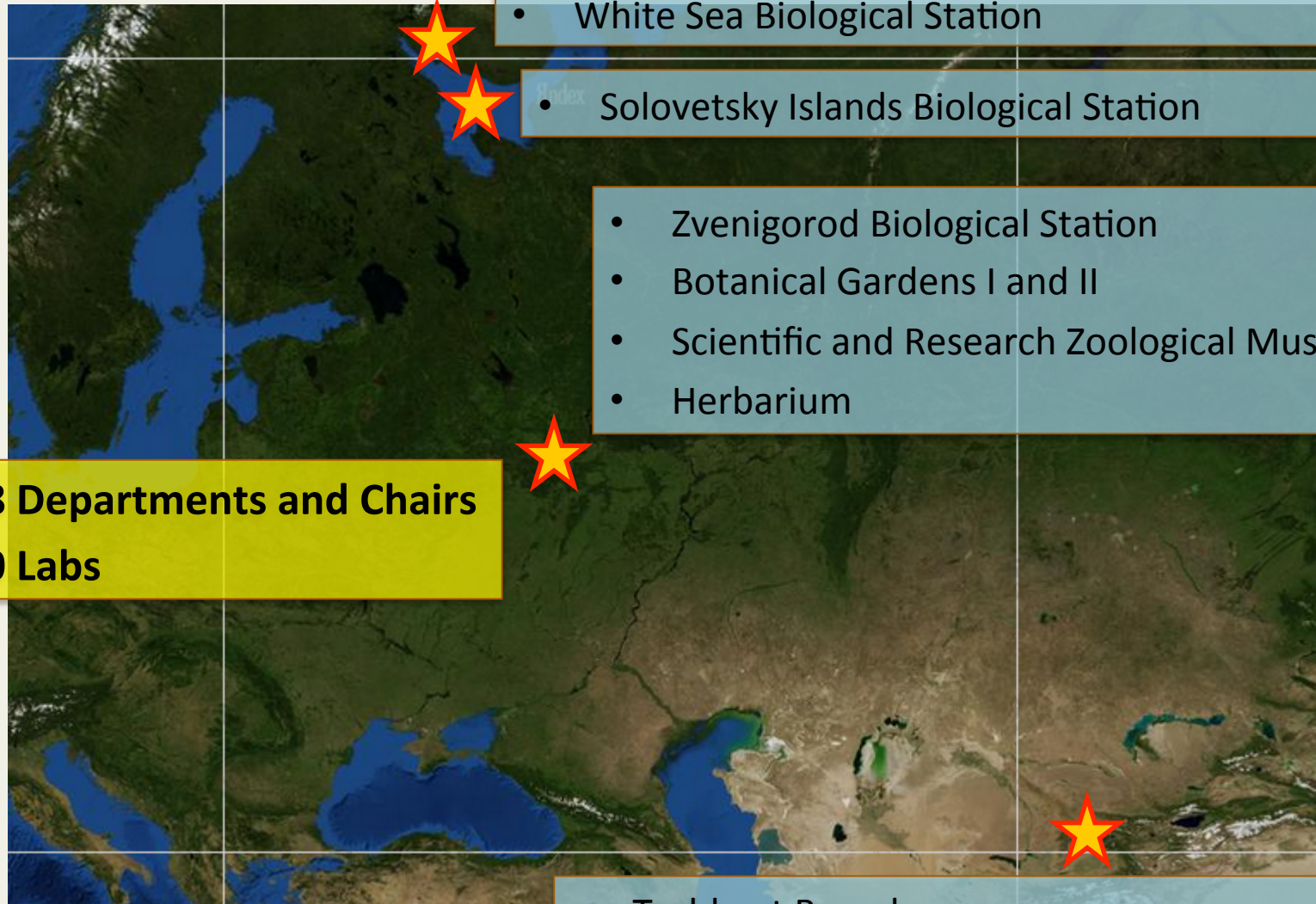
Faculty of Biology

- 1'500 staff
 - 100 professors
 - 140 associate professors
 - 70 researchers
- 1'800+ students (of MSU total 40'000+)
- 300+ PhD students (of MSU total 10'000+)

Undergraduate trajectories



Faculty of Biology: Branches



- White Sea Biological Station

- Solovetsky Islands Biological Station

- Zvenigorod Biological Station
- Botanical Gardens I and II
- Scientific and Research Zoological Museum
- Herbarium

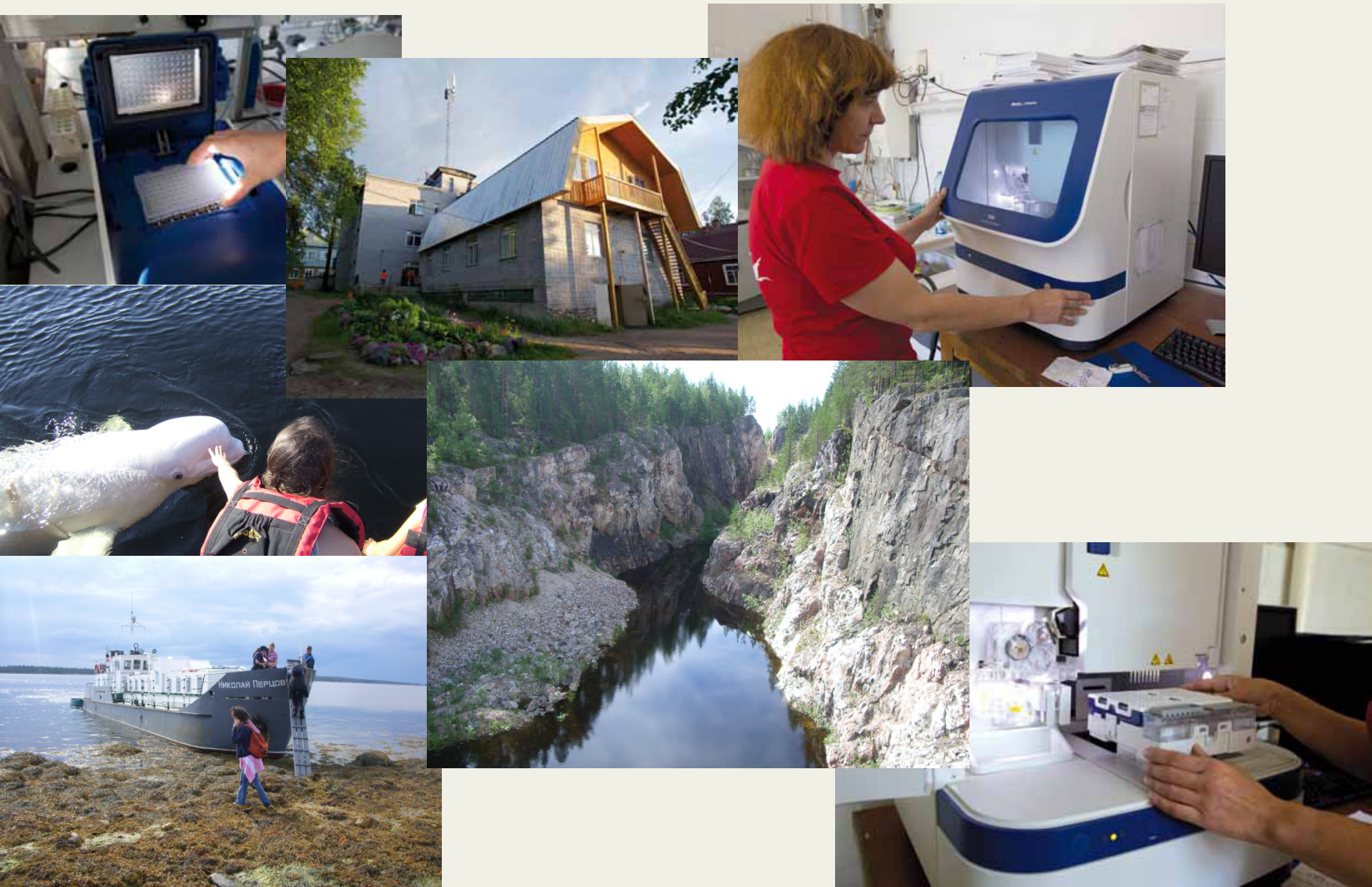
28 Departments and Chairs
60 Labs

- Tashkent Branch

Zvenigorod Biological Station



White Sea Biological Station



Research and training



General Biology
Ecology

Biotech
Bioengineering

Physiology

**Molecular,
Cell Biology**

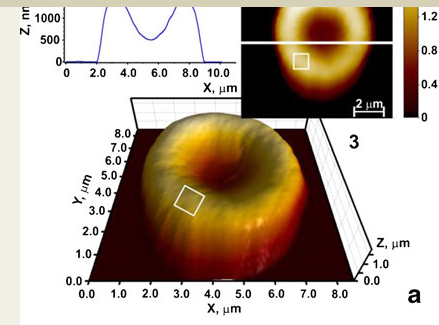
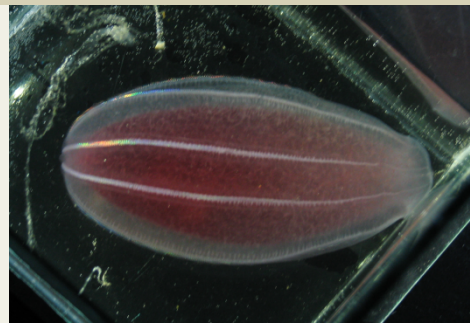
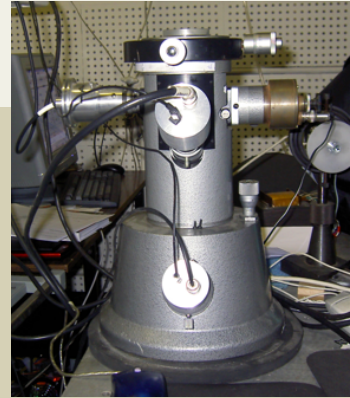
- DEPARTMENT OF BIOCHEMISTRY
- DEPARTMENT OF BIOTECHNOLOGY
- DEPARTMENT OF BIOORGANIC CHEMISTRY
- DEPARTMENT OF VIROLOGY
- DEPARTMENT OF NEUROLOGY
- DEPARTMENT OF GENETICS
- DEPARTMENT OF IMMUNOLOGY
- DEPARTMENT OF CELL BIOLOGY AND HISTOLOGY
- DEPARTMENT OF MICROBIOLOGY
- DEPARTMENT OF MOLECULAR BIOLOGY
- DEPARTMENT OF MOLECULAR PHYSIOLOGY
- DEPARTMENT OF PHYSICAL AND CHEMICAL BIOLOGY
- DEPARTMENT OF PLANT PHYSIOLOGY
- DEPARTMENT OF HUMAN AND ANIMAL PHYSIOLOGY
- DEPARTMENT OF EMBRYOLOGY

- DEPARTMENT OF ANTHROPOLOGY
- DEPARTMENT OF BIOLOGICAL EVOLUTION
- DEPARTMENT OF HIGHER PLANTS
- DEPARTMENT OF GEOBOTANY
- DEPARTMENT OF HYDROBIOLOGY
- DEPARTMENT OF INVERTEBRATE ZOOLOGY
- DEPARTMENT OF VERTEBRATE ZOOLOGY
- DEPARTMENT OF ICHTHYOLOGY
- DEPARTMENT OF MYCOLOGY AND ALGOLOGY
- DEPARTMENT OF GENERAL ECOLOGY
- DEPARTMENT OF ENTOMOLOGY
- DEPARTMENT OF BIOENGINEERING
- DEPARTMENT OF BIOPHYSICS

- BUSINESS INCUBATOR
- BOTANICAL GARDENS
- BIOSTATIONS

International Education Strategy

1. Short term programs
 - a) Summer and Winter Schools
 - b) Open-access Field Studies
2. Master and joint programs (in English)
 - a) Ecology (SUNY)
 - b) Nanobiotechnology (Genoa)





Master in Biology

Programs offered by the Faculty of Biology, Lomonosov Moscow State University (Russia)

UPDATES

Program of winter entomology (IWES)

July 10, 2015

Program of winter hydrobiology course (IWES)

July 10, 2015

Program of "Plants under the snow" course (IWES)

July 10, 2015

Program of vertebrate zoology course (IWES)

July 10, 2015

About



The Faculty of Biology seen from LMSU Main Building

Lomonosov Moscow State University is the biggest and most respected University of the ex-USSR, current Russia and the CIS. Due to historical reasons, since its foundation in 1755, we have offered numerous higher education programs only in Russian language. The University still dominates "The World of the Russian Language", and although many international students have graduated from LMSU, all of them have had to study Russian to be able to study Math, Geology, Physics and